

Advanced Agility & Adaptability

No Heavy Machinery or Infrastructure  
needed for Installation

Effortless Monitoring and Reporting of  
Alerts and Video Analytic Data

User-Friendly Mobile and Web Interface

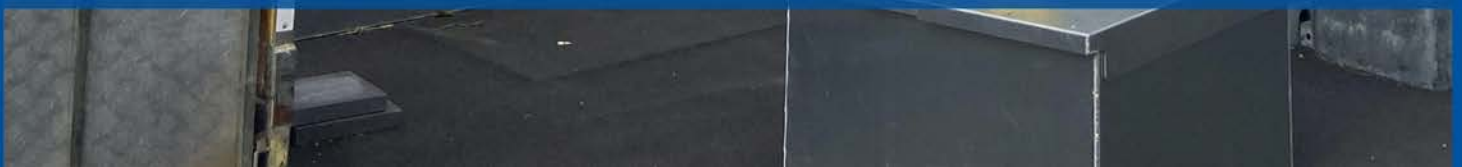
Versatile for Urban and Remote  
Locations

Installed by 1 person within 1 hour.



## PORTABLE VISION

New Zealand's Most  
Portable CCTV Tower System:  
**Monitor Your People, Assets and Spaces**



## Portable Vision: Light Duty Solution

Suitable for urban sites or secure sites



- 120W Solar Panel
- 100Ah Lithium Battery
- 3 Days Redundancy Time
- 4G Router and Data Plan for Sites with no Wi-Fi
- 4.2m Aluminium Pole with Removable Winch Function
- *Colour options available in yellow, silver or black*
- Aluminium Base with Removable Bricks
- Anti-Climb Collar
- Smart AI Analytic Camera

## Customisable Features

We've got you covered with a range of flexible options to tailor a solution that fits your needs.

Solar panel size options for greater redundancy time and charging of battery

Camera flexibility of preferred brand and model

Trailer option for transportation



Upgrade to 200Ah battery

Pole length and pole colour customisation

Solid concrete base option with molds underneath for ease of forklift transportation



- **Autonomous & Efficient:** Solar-powered with infrared night-time vision.
- **Wireless Operation:** 4G mobile network connectivity for remote sites.
- **24/7 Surveillance:** Motion detection recording around the clock.
- **Robust Design:** Durable with optional lighting and horn speaker accessories.
- **NZ Made:** Quality assurance with a 3-year warranty.
- **Flexible Leasing:** Options available for monthly leasing



## Industries Best Suited for Portable Vision

Whether you're protecting your people, assets or spaces, our Portable Vision Solution is your ideal choice.

- **Construction Sites:** Ensure worker safety and monitor equipment.
- **Event Venues:** Oversee large crowds and manage traffic flow.
- **Parking Lots:** Monitor vehicle movement and deter unauthorized access.
- **Agricultural Fields:** Oversee local traffic movement, and monitor equipment crops and stock.
- **Remote Infrastructure:** Monitor and secure isolated assets like substations or telecom towers.
- **Warehouses & Storage Facilities:** Ensure inventory safety and monitor staff movement.
- **Public Parks & Recreational Areas:** Monitor visitor activities and ensure public safety.
- **Retail & Shopping Centers:** Oversee customer movement and deter potential theft.



# Advanced Analytic Camera



Fixed IR dome with motorised zoom and focus



Versatile, robust and sleek, fit for both the harshest outdoor and discreet indoor setups



Built-in AI video and audio analytics and on-device storage

## Cloud-Native Analytic Camera

We use an AI-powered indoor and outdoor dome camera for a versatile, robust and effortless install over the cloud, helping you focus on the events that require immediate attention

With up to 4K resolution, HDR and IR illumination, the compact camera provides crisp, clear images even in challenging lighting conditions.

On-camera storage processing and cloud management minimize physical infrastructure, enabling plug and play configuration for fast deployments. Intelligent video and audio analytics help detect threats in real-time, and provide valuable insights to improve operations.



### CAMERA RANGE

- Up to 4K Video Resolution
- Built-in AI video and audio analytics
- On-device storage
- Up to 10 years warranty
- Third Party integration with Camera Device, VMS, or both – never a brick.

**Vehicle Detection and Alarming**



**People / Object Detection and Alarming**



**License Plate Detection and Alarming**



**Hard Hat / Hi Vis Detection and Alarming**



## Customised CCTV

Experience the ultimate flexibility as we tailor the perfect camera configuration to meet your specific needs.

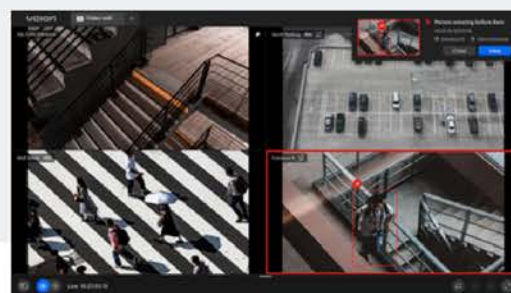
Resolution	5MP	4K		
Colour	BLACK	WHITE		
Onboard Data Storage	30 DAY	60 DAY	120 DAY	
Cloud Data Storage	30 DAY	60 DAY	120 DAY	
Warranty	1 YEAR	3 YEAR	5 YEAR	10 YEAR





Open, scalable, secure and easy to use, we provide you full control over an enterprise-grade, cloud-based AI video management system (VMS). The VMS provides several intelligent analytics including object identification, hard hat/hi-vis detection, license plate recognition, heat maps, and more to come, all at the same time. It is an extremely smart system, all processed on the cloud as opposed to the camera edge.

- Extremely User-Friendly interface
- Flexible and versatile platform for multiple sites and cameras
- Receive real-time SMS and email alerts on events with thumbnails, time and location data
- Detect and classify anomalies based on perimeters and behaviours
- Differentiate between people, vehicles and other objects

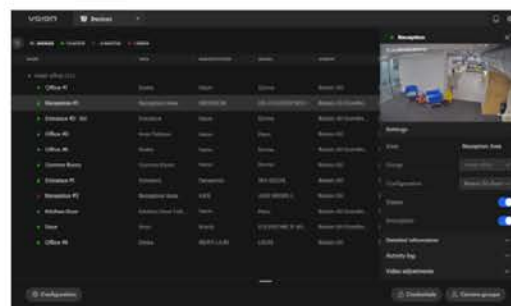


**Video View** – Create your preferred views, by customizing the layout and cameras to display.

**Map View** – upload your floor plans and create detailed maps of the areas protected by your cameras and devices.

**Smart Presence** – view your site maps and see where objects (people, vehicles) are as they move around your protected areas in real-time.

**Rules** – create rules to generate alerts based on specified cameras (or camera groups), audio or visual events, and other selection criteria.



Ava Aware Cloud is a powerful video management system equipped with integrated machine learning capabilities accessible in the cloud. Aware Cloud analyses video feeds from your cameras all the time and in real-time. It identifies objects and events, and sends instant notifications and alarms based on unusual activity and rules to help your team focus on what really matters.



## System

- Up to 200 cameras per server
- Unlimited cameras per site
- Unlimited servers per site

## Device Support

- Automatic device discovery
- Third-party IP cameras & encoders H.264 & H.265 video compression MJPEG video compression JPEG2000 video compression

## Streaming

- Dynamic stream selection

## Search

- Search by similarity
- Search by physical characteristics
- Search by event
- Search by image
- Search across all video
- Playback timeline with embedded thumbnails
- Smart Presence™

## Pervasive Video Analytics

- Unusual event detection
- People counting
- Vehicle counting
- Forensic investigation
- Intrusion detection
- Real-time notifications and alerts
- Spotlight

## Security and Privacy Protection

- HTTPS camera connectivity SRTP support AES video encryption Digital watermarking against tampering RTSP over TLS

## Client

- Intuitive and powerful interface
- HTML5 web client
- Saved views
- Interactive maps
- Active directory import
- Multi-camera export
- Configurable recording schedule

## Other Features

- Email event notification
- Rule triggers
- Self-learning video analytics event configuration
- Ava Machine Learning server
- Analytics configuration

## Data Residency

To provide the cloud infrastructure needed to host and run our solution, we use services from Google Cloud Platform (GCP), Wasabi, and Digital Ocean.

Our deployments are hosted on GCP, with Wasabi providing the cloud video storage used by the camera's.

Subdomain used for deployments	GCP Physical Location	Wasabi Physical Location
au1.aware.avasecurity.com	Sydney	Sydney



# Camera Spec Sheet

## Image Sensor

8MP (4K) or 5MP

## Image Sensor Size Format

1/1.8"

## Lens

Focal Length: 3.6-10mm

Aperture: f/1.5-f/2.8

Remote zoom and focus

P-iris

## IR night vision

Automatic night mode

IR-cut filter

IR range: 30m

850 nm IR LED

## Minimum illumination in color mode

0.15lux

## Field of View

100°-45° Horizontal

53°-25° Vertical

## Maximum resolution & Frame rate

8MP 3840x2160@30fps

5MP 3072x1728@30fps

## Dynamic range

Multi-exposure line-based HDR

## Video compression

H.265, H.264, Motion JPEG

## Audio

Microphone array (4x microphones)

AI audio event classification

Audio source localization

## Security

Factory-installed certificates,

No default passwords,

Mandatory access authentication

HTTPS/TLS encryption

## Network protocols

IPv4, HTTPS, TLS, DNS, mDNS, DNS-SD, NTP,

RTSP, RTP, RTCP, ICMP, DHCP, ARP

Streaming: RTP/UDP, RTP/RTSP/HTTPS/TCP

## Power source

PoE+ (802.3at Type 2)

For installation only: USB-C (1.5A mode)

## Power consumption

Typical: 5 W

Max without heater: 13 W

Max with heater: 23 W

## Storage

MicroSD, SDXC UHS-I

## Connection

802.3ab 10/100/1000 Gigabit Ethernet

USB-C for preview and setup

## Installation aid

Electronic leveler

Flexible bracket, mounts to standard back boxes.

## Adjustment range

Pan, Tilt, Azimuth

## Impact resistance

IK10 (IEC/EN 62262)

## Ingress protection

IP66 (IEC/EN 60529)

## Temperature

Operating: -40°C to +50°C

Storage: -40°C to +60°C

## Physical characteristics

Dimensions: 152x152x96mm

Weight: 1.2 kg

Body: Aluminum

## EMC

EN 55032, EN 61000-3-2/-3, EN 55024,

EN 55035, EN 61000-6-1/-3, EN61000-6-2/-4,

FCC Part 15B, ICES-003 Issue 6

## Safety

IEC60950-1, IEC62368-1, IEC60950-22,

UL/CSA60950-1, UL/CSA 62368-1,

UL E164374, NOM-019, IEC62471(IR LED)



0800 420 032



sales@asgtech.co.nz



www.asgtech.co.nz